



EIRA

Vessel name	Built	IMO	Call sign	Flag
Eira	2001	9225299	OJJP	Finland

MAIN PARTICULARS

Shipyard	Tsuneishi Shipbuilding Co. Ltd, Japan
Classification	Lloyd's Register 100 A1 Strengthened for heavy cargoes, LMC, UMS, BWTS*, Shipright SCM
Type	General cargo ship
Ice class	1A Super
Gross tonnage	14,665
Net tonnage	5,900
Length over all	157.00 m
LBPP	148.00 m
Breadth	24.60 m
Moulded depth	13.00 m
Draft	9.03 m SSW
Height wl-hc	10.2 m
Airdraft from keel	38.83 m
TPC	33.50 mt

MACHINERY

Main engine	1 x Mitsui MAN B&W, 7,860 kW at 129 rpm
Auxiliary engines	3 x Wärtsilä NSD 6L20 à 840 kW
Shore power	no
Bow thruster	650 kW
Stern thruster	650 kW

CAPACITY

DWT	19,625 mt
Cubic capacity	24,040 m ³ / 849,123 cbft
Container intake	n/a

HOLDS & HATCHES

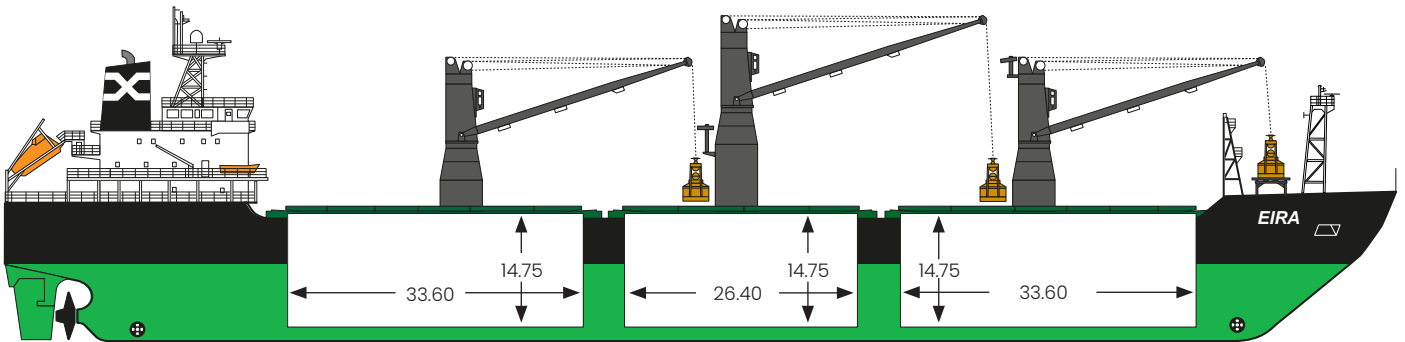
Hatches	Electro hydraulic hatches folding type
Holds	3 double skin holds
Hold #1 dimensions	33.60 x 19.60 x 14.75 metres (narrowing fore) 8,525.89 m ³ / 301,134 cbft
Hold #2 dimensions	26.40 x 19.60 x 14.75 metres 6,884.14 m ³ / 243,147 cbft
Hold #3 dimensions	33.60 x 19.60 x 14.75 metres (narrowing aft) 8,630.88 m ³ / 304,842 cbft
Bulkheads	no
Tweendeck	no
Deck load	0.8 mt/m ²
Tanktop strength	13.60 mt/m ²

CRANES

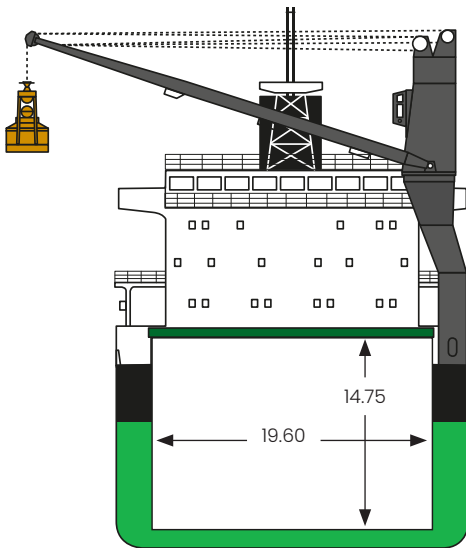
Cranes	Three electro-hydraulic cranes with 26 /28 m outreach. Cranes are not combinable.
Grabs	3 x 12.5 m ³
Safe working loads	27.5 mt (hook) and 25 mt with 12,5 m ³ grab

EIRA

HOLD DIMENSIONS



CROSS SECTION



All details are given in good faith, without guarantee and can vary on the individual vessels. Drawings are for illustrative purposes only.