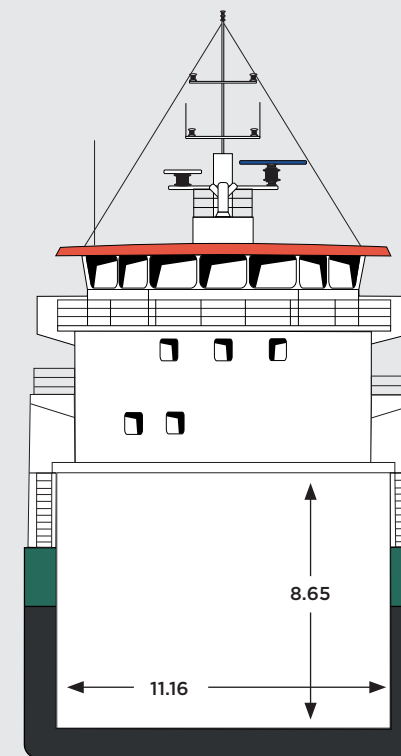
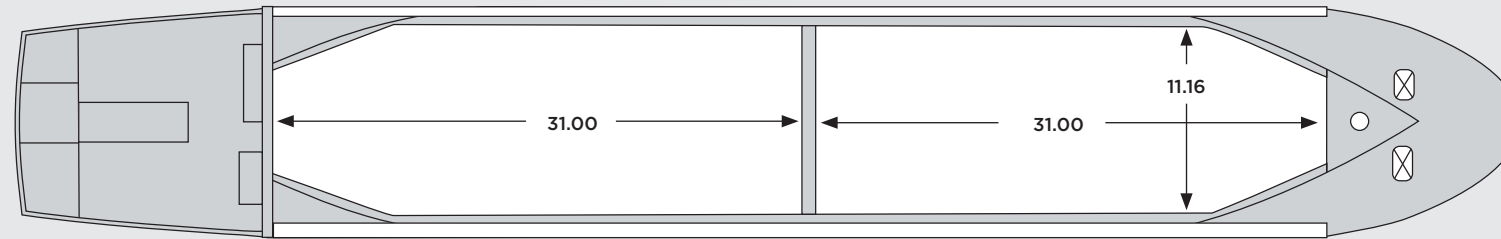
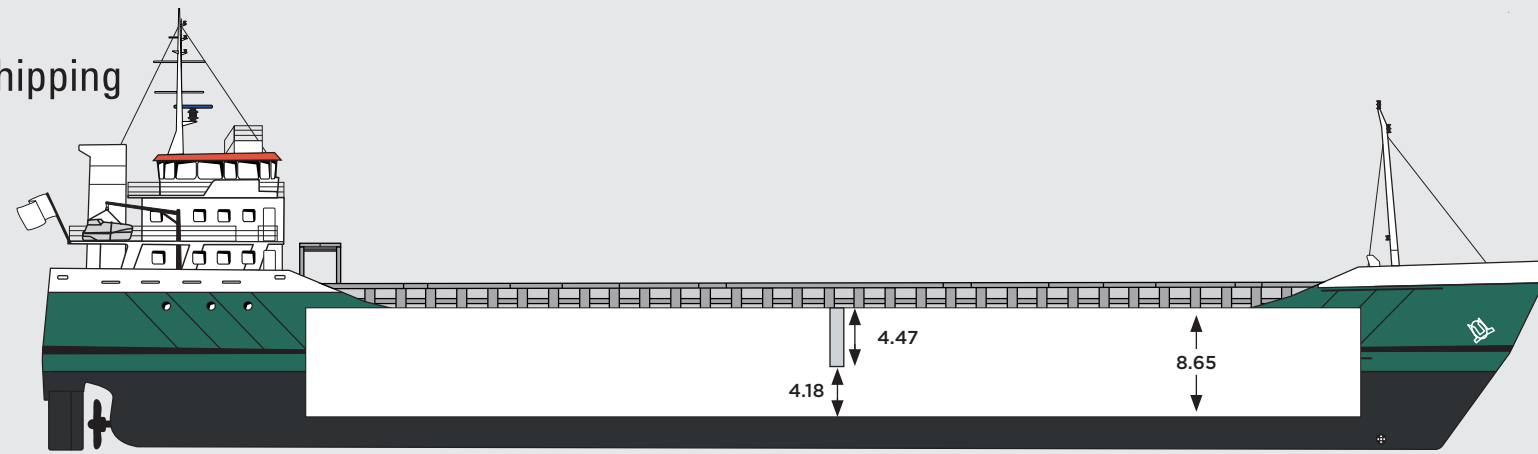




ESL Shipping



## CAPELLA & DELFIN

<b>Built</b>	1999 / 1998
<b>Shipyard</b>	Scheepswerf Peters B.V., Netherlands
<b>IMO number</b>	9190171 / 9173161
<b>Call sign</b>	YLRB / YLRA
<b>Class</b>	DNV GL @ 100 A5 E3 General cargo ship
<b>Ice class</b>	1A
<b>Flag</b>	Latvia
<b>Port</b>	Riga
<b>DWT</b>	3,793 mt
<b>DWCC</b>	3,550 mt summer / 3,450 mt winter

<b>GT / NT</b>	2,789 / 1,587
<b>Cubic capacity</b>	5,663 m <sup>3</sup> / 200,000 cbft
<b>LOA</b>	89.25 m
<b>LBPP</b>	84.96 m
<b>Beam</b>	13.40 m
<b>Moulded depth</b>	7.16 m (abt.)
<b>Draft</b>	5.70 m (abt.)
<b>Height wl-hc</b>	6.50 m (abt.)
<b>Airdraft from keel</b>	26.50 m in ballast
<b>Bow thruster</b>	yes

<b>Classification</b>	DNV GL
<b>P and I club</b>	Gard
<b>Hatches</b>	2 hatches, dimensions 31.00 m x 11.16 m each
<b>Holds</b>	2 cargo holds, 2 movable bulkheads
<b>Hold dimensions</b>	
<b>no.1.</b>	31.00 x 11.16 x 8.65 metres
<b>no.2</b>	31.00 x 11.16 x 8.65 metres Holds tapering fore 7.20 m and aft 5.00 m.
<b>Deck load</b>	1.60 mt
<b>Tanktop strength</b>	14.00 mt/m <sup>2</sup>

Particulars are given in good faith but without guarantee.