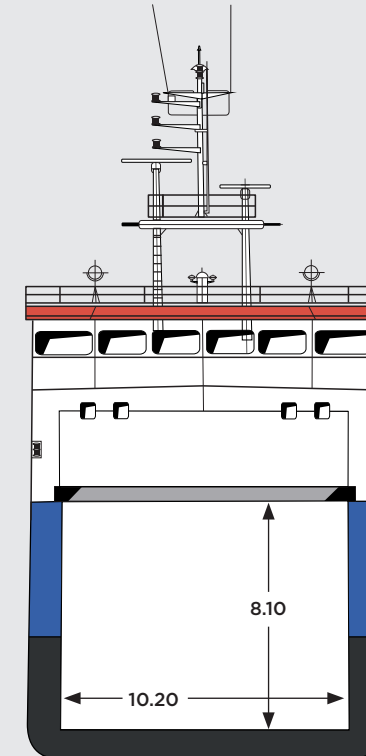




ESL Shipping



BALTIC CARRIER & BALTIC SKIPPER

Built	1997 / 1996
Shipyard	Onega Arminius Shipbuilding / Arminius Werke
IMO number	9138197 / 9138185
Call sign	ZDFD4 / ZDFD5
Class	DNV GL @ 100 A5 M E2 General cargo ship
Ice class	1B
Flag	Gibraltar
Port	Gibraltar
DWT	3,110
DWCC	2,950

GT / NT	2,280 / 1,244
Cubic capacity	4,276 m ³ / 151,000 cbft
LOA	82.50 m
LBPP	78.57 m
Beam	12.50 m
Moulded depth	6.65 m (abt.)
Draft	5.10 m (abt.)
Height wl-hc	6.50 m
Airdraft from keel	25.5 m in ballast (10.0 m with mast collapsed)
Bow thruster	yes

Classification	DNV GL
P and I club	Gard
Hatches	1 hatch, dimensions 52.0 m x 10.2 m
Holds	1 cargo hold, 2 movable bulkheads
Hold dimensions	
no 1.	50.50 x 10.20 x 8.10 metres 4,276 m ³ / 151,000 cbft 50.50 m clear length with bulkheads fore/aft
Deck load	1.52 mt
Tanktop strength	14.0 mt/m ²

Particulars are given in good faith but without guarantee.