



ESL Shipping
AtoB@C Shipping

Project References

Case examples:

Windmill Components
Industrial Components
Propulsion Units
House modules
Tanks

GOLD

2023
ecovadis
Sustainability
Rating

Table of contents:

WINDMILL BLADES	2
WINDMILL TOWER SECTIONS	3
WINDMILL COMPONENTS	4
INDUSTRIAL COMPONENTS	5
ENGINES, TRANSFORMERS AND STATORS	7
PROPULSION UNITS	9
HOUSE MODULES	10
ADDITIONAL SERVICES	11

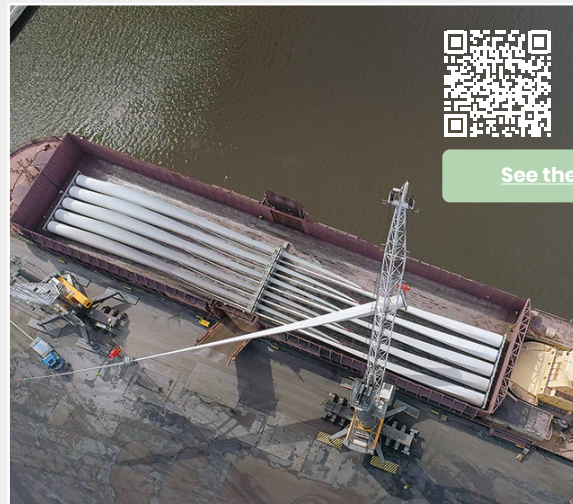


WINDMILL BLADES

Our fleet offers a wide range of options based on the size of your blades. Our new Electramar-class vessels, featuring a bridge-forward design, enable significantly higher deck loads compared to other vessels.

2021
BAY OF BOTHNIA
Pusher Steel + Barge Tasku

2021
THE NETHERLANDS TO SWEDEN
M/S Eileen C



[See the video >](#)



WINDMILL TOWER SECTIONS

Depending on port restrictions and required volumes, tower sections can be transported using either our handysize or coaster tonnage.

2023
TURKEY TO FINLAND
Several shipments

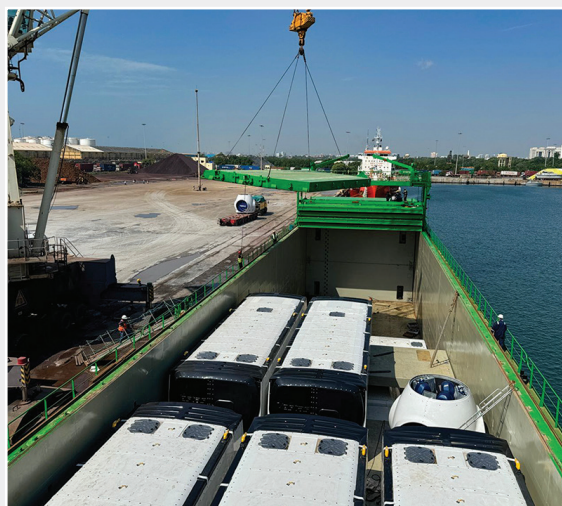


See the video >

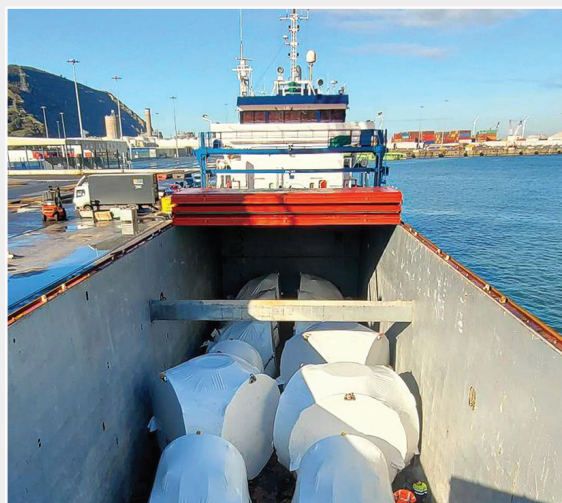
WINDMILL COMPONENTS

Our new Electramar-class plug-in hybrid vessels feature an unobstructed 60-metre-long hold and nearly 30 metres of tweendeck space, ensuring efficient stowage.

2024
INDIA TO SPAIN AND ITALY
M/S Ecomar



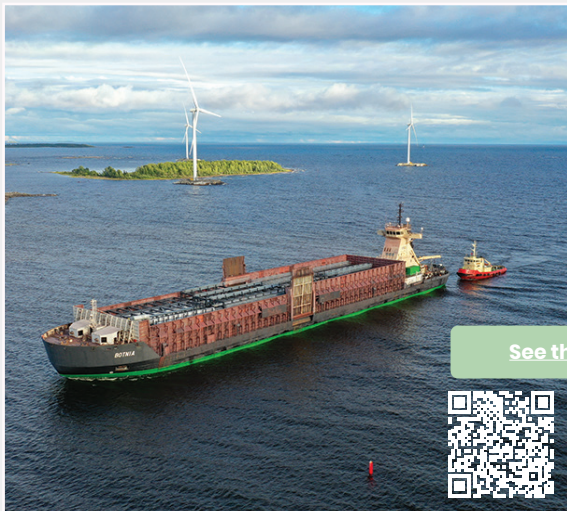
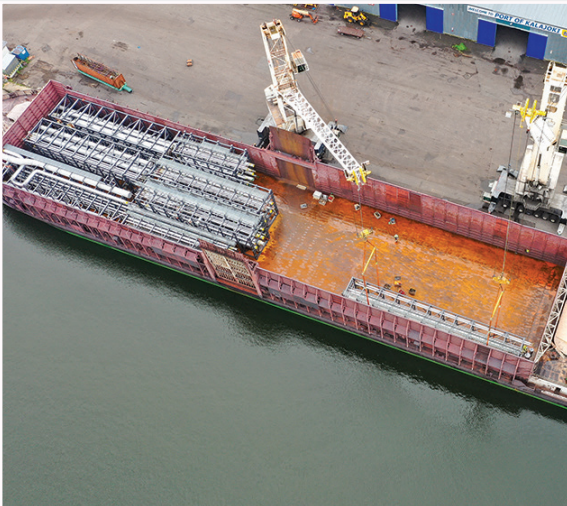
2021
SPAIN TO DENMARK
M/S Silvamar



INDUSTRIAL COMPONENTS

Our fleet offers a wide range of options tailored to the size and destination of your components. For shipments within the Baltic Sea, our 105-metre-long open hold barges are an excellent choice for transporting very large units.

2022
PIPE BRIDGE SECTIONS
KALAJOKI TO KEMI
Several shipments
Pusher + barge combination



[See the video >](#)



2023
DRUM PULPERS
FINLAND TO GERMANY
M/S Polyaland



2024
TANKS
BAY OF BOTHNIA
M/S Reymar

2023 & 2024
STEEL STRUCTURES
INDIA TO SWEDEN
M/S Electramar & M/S Aquamar



ENGINES, TRANSFORMERS AND STATORS

Our coaster fleet is equipped with bulkheads, providing a cost-effective solution for shipping your goods as part cargo.

2024
ENGINES
FINLAND TO NETHERLANDS
M/S Reiderdijk



2024
STATOR
POLAND TO FINLAND
M/S Optimar



2022
TRANSFORMER
NETHERLANDS TO FINLAND
M/S Baltic Merchant



PROPULSION UNITS

Due to the height of these units, the best options from our coaster fleet are our 5,000-6,000 dwt vessels. These vessels are equipped with bulkheads, providing a cost-effective solution for shipping propulsion units as part cargo.

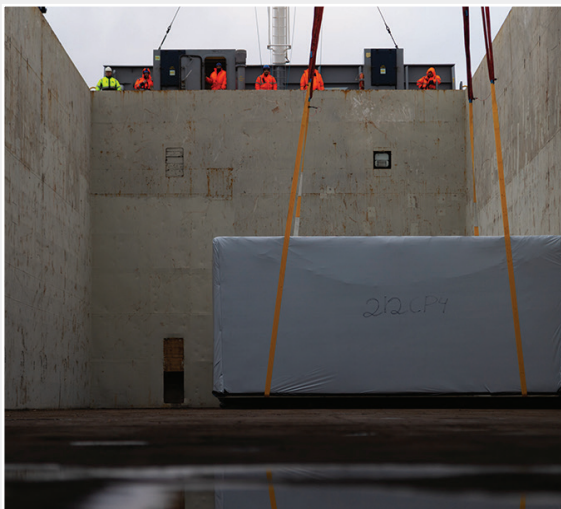
2018
FINLAND TO FRANCE
M/S Rocamar



HOUSE MODULES

Transport by sea helps to decrease the traffic on the road network. Around 40 trucks were needed to transport the same amount modules than our 5,000 dwt vessel could transport in a single shipment.

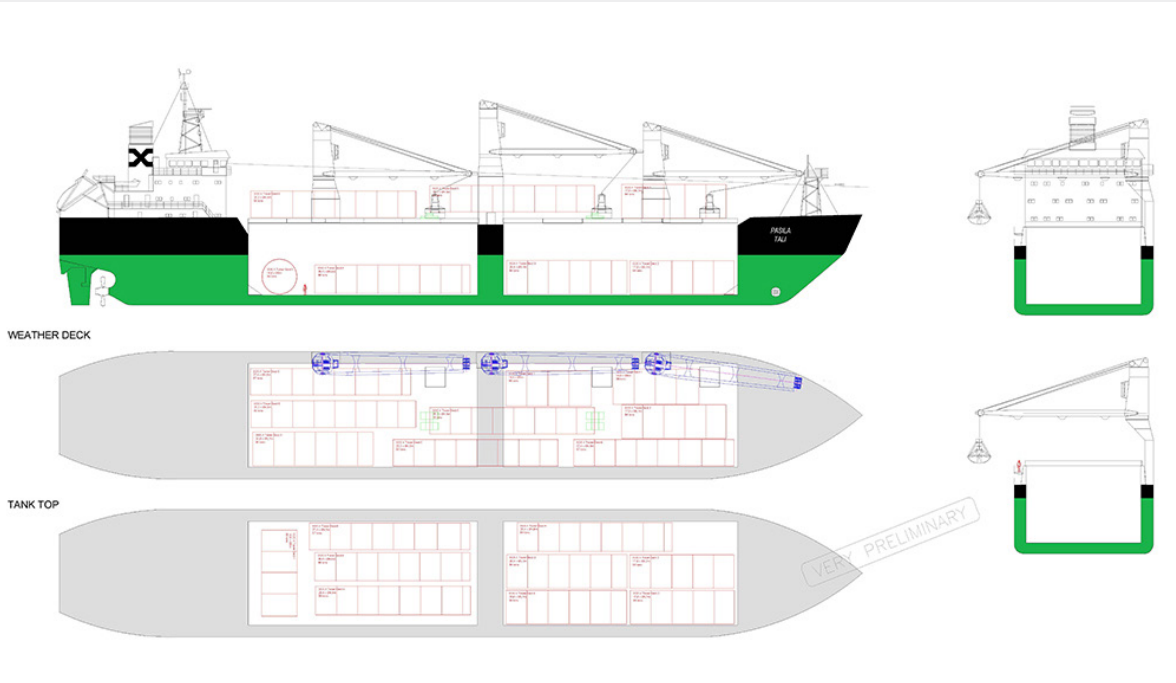
2018 & 2019
BALTIC SEA
M/S Reymar & M/S Rocamar

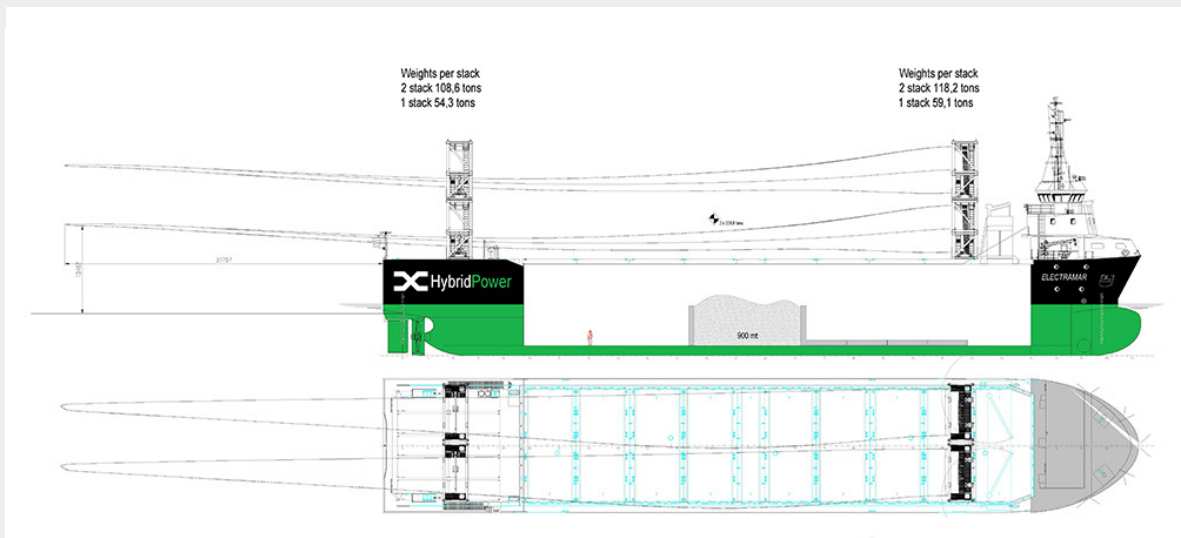


ADDITIONAL SERVICES

Inhouse engineering

All project cargoes require some level of engineering work as every shipment is unique. We can handle this engineering work in-house, using advanced software tools and the expertise of our skilled team. This enables us to create detailed stowage and lashing plans specifically for your cargo, ensuring safe and secure transport. Our thorough approach optimizes space and stability while complying with all safety standards and regulations, giving you peace of mind during the shipping process.





Comprehensive emission reporting

If you are looking for a way to monitor and reduce the environmental impact of your logistics operations, you might be interested in our Customer portal. The portal allows you to access and analyze the emissions from your shipments, as well as perform what-if calculations to explore different fuel combinations and their impact on the emissions of your shipments.

Switch to renewable marine fuel – available across the fleet today

Did you know that our entire fleet of ships can run on Neste's co-processed marine fuel? This is a revolutionary product that can help us reduce our environmental impact and fight climate change. Unlike conventional fossil fuels, Neste's co-processed marine fuel is made from renewable and recycled materials, such as used cooking oil, animal fat or vegetable oils. Our LNG-powered vessels Viikki and Haaga are the most energy-efficient in our fleet and fully compatible to use 100% renewable liquefied biogas as a main fuel.

[Read more about our green solutions >](#)

If you have any questions, please contact:

Juha Ylitalo

Head of Renewable Energy and Project
Shipments
Direct: +358 40 520 0928
projects@eslshipping.com
projects@atobatc.se



ESL Shipping
AtoB@C Shipping

ESL Shipping

Lintulahdenkuja 10
00500 Helsinki
Finland
www.eslshipping.com

AtoB@C Shipping

Hamntorget 2A
27139 Ystad
Sweden
www.atobatc.com