

Pusher Vessels and Barges

Steel master:

gsm: +358 40 5602 057
 fax: +46 10 2580 680
 E-mail: steel@eslshipping.fi

Rautaruukki master:

gsm: +358 40 5602 488
 fax: +46 10 2580 677
 E-mail: rautaruukki@eslshipping.fi

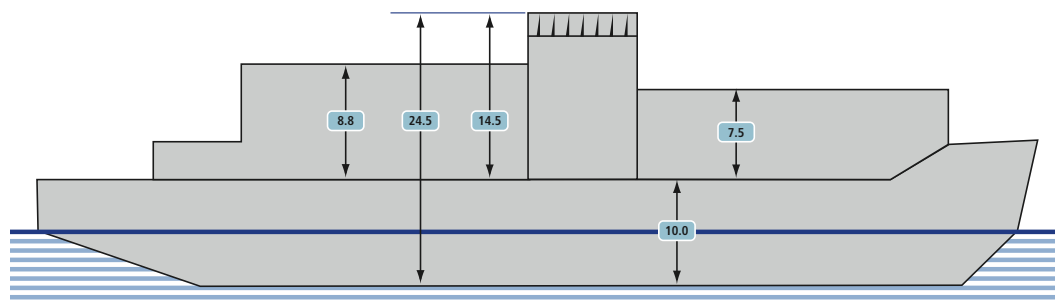


Main details: Pushers Steel and Rautaruukki

General information: Steel	
Vessel type	pusher/barge
Dead weight	431
Net	469
Gross	1562
Length oa	41,7 m
Length bpp	40,2 m
Breadth mld	15,5 m
Draught max	6,85 m
Main engine	2 x 3840 kW Wärtsilä Sulzer 6ZAL40
Auxiliary engines	2 x Wärtsilä Vasa 4R22HF, 590 kw x 1000 rpm
Emergency generator	1 x Volvo TMD102A, 158 kW x 1500 rpm/200 kVA, AC 400V/50Hz
Propeller	1 x Rauma-Repola Liaaen CP propeller, 4 blade, ø 4700 mm

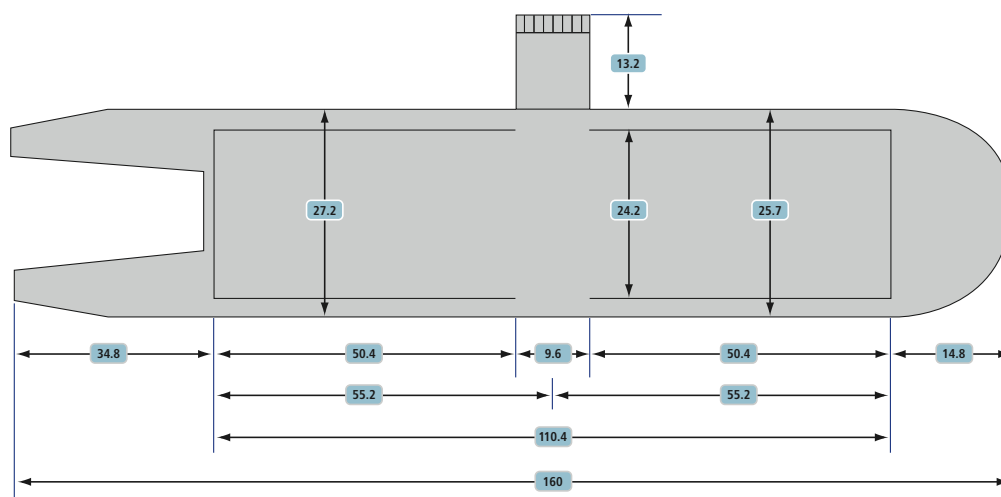
General information: Rautaruukki	
Vessel type	pusher/barge
Dead weight	445
Net	467
Gross	1554
Length oa	41,7 m
Length bpp	40,2 m
Breadth mld	15,5 m
Draught max	6,85 m
Main engine	2 x 3840 kW Wärtsilä Sulzer 6ZAL40
Auxiliary engines	2 x Wärtsilä Vasa 4R22HF, 590 kw x 1000 rpm
Emergency generator	1 x Volvo TMD102A, 158 kW x 1500 rpm/200 kVA, AC 400V/50Hz
Propeller	1 x Rauma-Repola Liaaen CP propeller, 4 blade, ø 4700 mm

Main dimensions of barges



If the ramp is used, max height of the quay is 2.40 m.

Draft: with cargo..... 6.80 m
 Ballast (middle connection)... 5.60 m
 Ballast (lower connection)... 4.40 m



Dimensions have been taken from 1:400 drawing.
 All details believed to be correct but not guaranteed.

Free driving width on the ramp: 7.6 m.



